

NRM Assessment Partnership Module Update

NRM Assessment Tool

Assessment

- [Recreation PSA Module](#)
- [NRM Module](#)
- [Env Stewardship Module](#)
- Partnership Module

Partnership Module

Welcome to the Partnership Module of the NRM Assessment Tool. This module is replacing your annual OMBIL update.

LAKE SONOMA / WARM SPRINGS DAM (DRY CREEK LAKE AND CHANNEL)

In Review

- Step 1 - Review Partnerships
 - [See All of Your Partnerships](#)
 - [Challenge Partnership](#)
 - [Contributions Program](#)
 - [Cooperating Association](#)
 - [Memorandum of Understanding/Memorandum of Agreement \(MOU/MOA\)](#)
- Step 2 - Annual Update
 - [See All of Your Partnerships](#)
 - [Challenge Partnership](#)
 - [Contributions Program](#)
 - [Cooperating Association](#)
 - [Memorandum of Understanding/Memorandum of Agreement \(MOU/MOA\)](#)
- [Summary](#)

"The views, opinions and findings contained in this report are those of the authors(s) and should not be construed as an official Department of the Army position, policy or decision, unless so designated by other official documentation."



US Army Corps
of Engineers®



Good Data Tells the Corps Story

1. Partnerships help get work done that we may not otherwise have the capability to do.
2. Partnerships build community support for the Corps and our programs, which can be leveraged in many other ways.
3. Partnerships help support our requests for the Recreation and ES budgets: They demonstrate that we have strong and robust NRM programs that should be financially supported in our budgets.
4. Partnership data helps build internal support for our programs all the way up the line.



Interest not just in what we do, but who we work with:

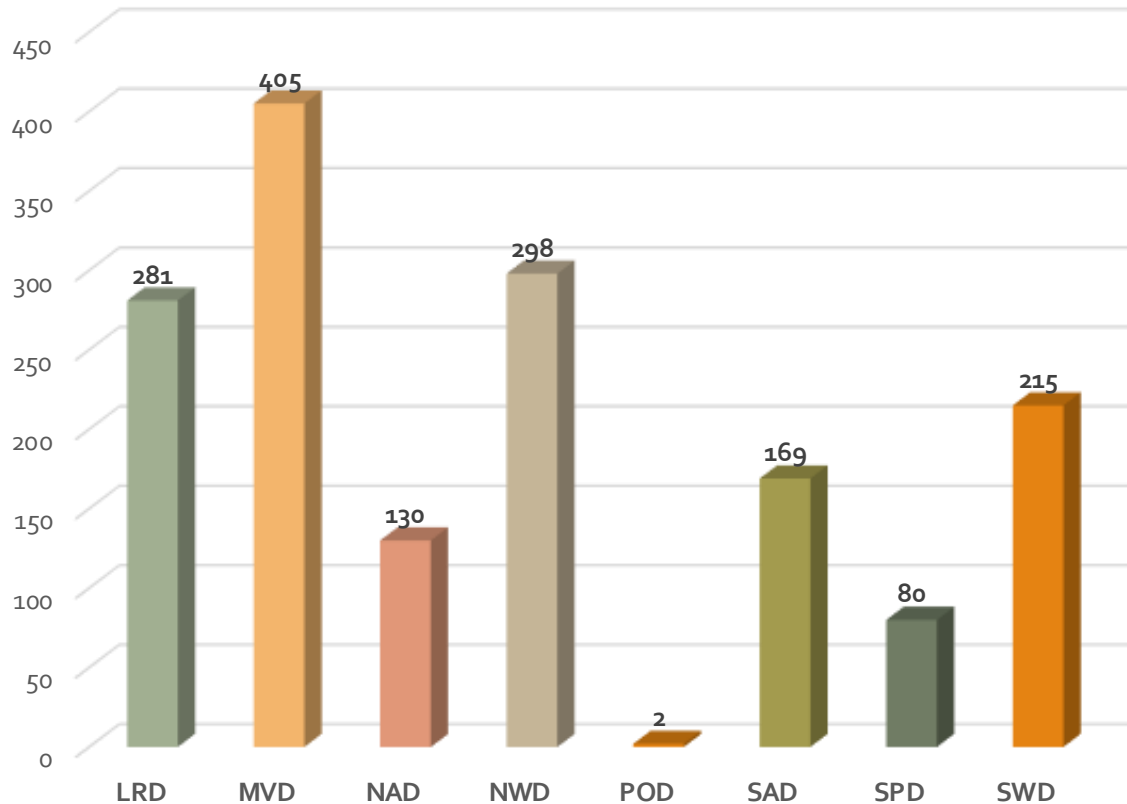
- Scout troops
- Tourism bureaus
- Youth service and conservation corps
- Outdoor recreation industry
- STEM-focused education groups



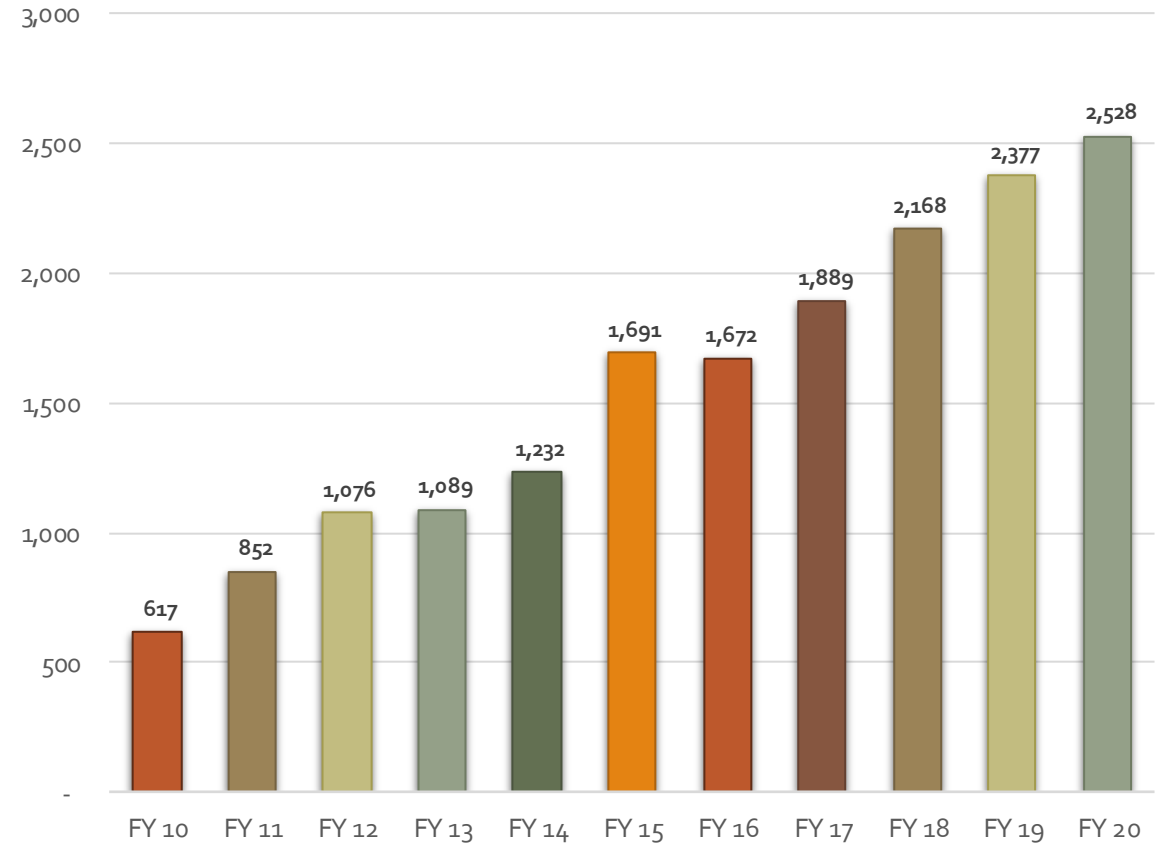
Partnerships Annual Data

FY 20 Partnership data in NRM-Assessment: 2,528 partnerships with a total value of \$113.1 million (Corps: \$24.8 million investment/ Partner leveraged investment: \$88.2 million)

Partners Engaged



Growth of Partnerships





- [Home](#)
- [Visitors](#)
- [Lake Discovery](#)
- [Recreation](#)
- [Env Compliance](#)
- [Env Stewardship](#)
- [Partners](#)
- [News/Events](#)
- [People](#)
- [Forums](#)
- [Learning](#)
- [GETS](#)
- [Tools](#)
- [New Postings](#)
- [Submit](#)
- [Index/Search](#)
- [?](#)

Partnerships in NRM Assessment/OMBIL

The NRM Assessment Tool and Operations and Maintenance Business Information Link (OMBIL) were developed to provide a location for data required to operate and manage the Operations function of the Corps. The NRM Assessment Tool contains 4 modules: Recreation PSA, NRM, Environmental Stewardship, and Partnerships where data is entered each year. OMBIL is the system used to run reports, and contains modules for each business function, which currently include Navigation, Hydropower, Recreation, Environmental Stewardship, Environmental Compliance, Flood Risk Management, Water Supply, and Safety & Occupational Health.

The Partnerships pages in OMBIL are located under the Recreation and Environment Stewardship Business Functions reports screen. Reports are listed in the drop-down menus under "COMMON – Partnership Detail Report, REC- Partnership Detail Report or REC-Partnership Summary Report, ES – Partnership Detail Report or ES – Partnerships Summary Report." (No password or special permissions required).

Annual fiscal data entry for the NRM Assessment Partnership pages opens each year October 1 - October 31 to enter the value of each partnership for the prior fiscal year.

Note: Partnership data entry involves a two-step process. Step 1: Enter information about the partnership, including agreement type, organization, organization type, date effective, description. Step 2: Enter information about the value of the partnership, including number of volunteers, volunteer hours, partner funds invested, professional services provided, materials and equipment donated, Corps contract funds, services, materials and equipment, and additional investments.

- [Annual Reports](#)

- [FAQs](#)

- [Training Resources](#)



- Home
- Visitors
- Lake Discovery
- Recreation
- News/Events
- People
- Forums
- Learning
- GE

OMBIL Partnerships Ann

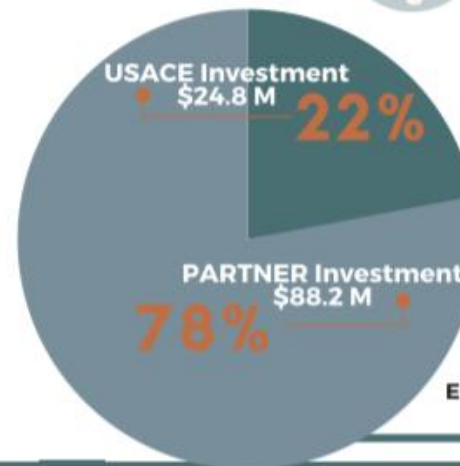
- [Annual partnership tracking spreadsheet](#) This spreadsheet is used to track most of the key data and information
- [FY 20 Partnerships and Volunteer Fact Sheet](#)
- [FY 20 Partnerships Detail Report](#)
- [FY 20 Volunteer Program Report for All USACE](#)
- [FY 19 Partnerships and Volunteer Fact Sheet](#)
- [FY 19 Partnerships Detail Report](#)
- [FY 19 Volunteer Program Report for All USACE](#)
- [FY 18 Partnerships and Volunteer Fact Sheet](#)
- [FY 18 Partnerships Detail Report](#)
- [FY 18 Volunteer Program Report for All USACE](#)
- [FY 17 Partnerships and Volunteers Fact Sheet](#)
- [FY 17 Partnerships OMBIL Detail Report](#)
- [FY 17 Volunteer Program OMBIL Report for All USACE](#)
- [FY 16 Partnerships and Volunteers Fact Sheet](#)
- [FY 16 Partnerships OMBIL Detail Report](#)
- [FY 16 Volunteer Program OMBIL report for All USACE](#)
- [FY 15 Partnerships Fact Sheet](#)
- [FY 15 Partnerships OMBIL ES-REC Summary Report for All USACE](#)
- [FY 15 Partnerships ES-REC Detail Report for All USACE](#)
- [FY 15 Volunteer Program Fact Sheet](#)
- [FY 15 Volunteer Service OMBIL Report for All USACE](#)
- [FY 14 Partnerships Fact sheet](#)
- [FY 14 Partnerships Summary](#)
- [FY 14 Partnerships Detail Report for all USACE - pdf version](#)

At the start of FY 20, USACE and our partners could not have predicted what was on the horizon halfway through the year with the onset of the global COVID-19 pandemic. Despite the unique challenges that were presented, in typical fashion our partners and volunteers rose to the occasion and persevered through the difficult times to continue to provide vital services to the public and their communities. It is a true testament to the relationships and trust built over the years that USACE and our partnering agencies and organizations tackled the situation head on and collaborated in unprecedented ways to develop shared messaging, procedures, and innovations to meet the increased public demand and access needed as record numbers of returning and new visitors sought to improve their mental and physical health while visiting our nation's public lands and waters.



\$113,077,957
TOTAL VALUE OF PARTNERSHIPS

2,528 TOTAL PARTNERS
(6% increase from FY19)



254 USACE PROJECTS WITH PARTNERSHIPS
(63% of USACE Projects)

390 NEW PARTNERSHIPS

RECREATION PARTNERSHIPS: 636
ENVIRONMENTAL STEWARDSHIP PARTNERSHIPS: 302

Maximizing Your Data Entry: Partnership Tracking Spreadsheet

- This can assist with keeping track throughout the year to make data entry in October much easier
- Available on NRM Assessment/OMBIL Partnerships FAQ page: <http://corpslakes.usace.army.mil/partners/ombil-annual.cfm>

PARTNERSHIP TYPE (MOU/MOA; Contributions, Challenge Partnership, Cooperative Agreement, Challenge Cost Sharing Cooperative Management)	ORGANIZATION	PRIMARY BUSINESS LINE	PRIMARY PURPOSE	DESCRIPTION	DATE EFFECTIVE	NUMBER OF VOLUNTEERS	VOLUNTEER HOURS	VOLUNTEER RATE	VALUE OF SERVICES	FUND \$ INVESTED	PROFESSIONAL SERVICE \$ PROVIDED	MATERIALS & EQUIPMENT DONATED	TOTAL PARTNER VALUE	CONTRACT COSTS	MATERIALS & EQUIPMENT	CORPS LABOR	TOTAL CORPS COSTS	TOTAL AMOUNT		
	(select from list of national organizations or create new)							Pre-entered	Auto calculated				\$0				\$0	\$0		
PARTNERSHIP TYPE (Handshake)	ORGANIZATION	PRIMARY BUSINESS LINE	PRIMARY PURPOSE	DESCRIPTION	DATE EFFECTIVE	NUMBER OF VOLUNTEERS	VOLUNTEER HOURS	VOLUNTEER RATE	VALUE OF SERVICES	FUND \$ INVESTED	ONAL SERVICE \$ PROVIDED	MATERIALS & EQUIPMENT DONATED	TOTAL PARTNER VALUE	HQ Investment	CONTRACT COSTS	MATERIALS & EQUIPMENT	CORPS LABOR	TOTAL CORPS COSTS	TOTAL AMOUNT	
								Pre-entered	Auto calculated				\$0					\$0	\$0	
PARTNERSHIP TYPE (Cooperating Association)	ORGANIZATION	PRIMARY BUSINESS LINE	PRIMARY PURPOSE	DESCRIPTION	DATE EFFECTIVE	NUMBER OF VOLUNTEERS	VOLUNTEER HOURS	VOLUNTEER RATE	VALUE OF SERVICES	VALUE OF SALES	FUNDS INVESTED	PROFESSIONAL SERVICES PROVIDED	MATERIALS & EQUIPMENT DONATED	TOTAL PARTNER VALUE	CONTRACT COSTS	MATERIALS & EQUIPMENT	CORPS LABOR	TOTAL CORPS COSTS	TOTAL AMOUNT	
								Pre-entered	Auto calculated					\$0				\$0	\$0	
PARTNERSHIP TYPE (Economy Act)	ORGANIZATION	PRIMARY BUSINESS LINE	PRIMARY PURPOSE	DESCRIPTION	DATE EFFECTIVE	FUNDS INVESTED	PROFESSIONAL SERVICES PROVIDED	\$ & EQUIPMENT DONATED	TOTAL PARTNER VALUE	CONTRACT COSTS	MATERIALS & EQUIPMENT	CORPS LABOR	TOTAL CORPS COSTS	TOTAL AMOUNT						
									\$0				\$0	\$0						

FY20 ANNUAL UPDATE

- These data are used for many different purposes, including decisions concerning program development, budget development and defense, tracking performance measures, preparation of briefings and fact sheets, asset management, etc.
- It is used to populate information on the Gateway and numerous other internal and external web sites.
- It provides a source of data, both inside and outside the Corps, for general information, industry directories, news articles, and many other uses.
- Inaccurate and/or incomplete data not only reflects poorly on the Corps and renders a disservice to the public but could also jeopardize the viability of our O&M missions.



US Army Corps
of Engineers®





- Home
- Visitors
- Lake Discovery
- Recreation
- Env Compliance
- Env Stewardship
- Partners
- News/Events
- People
- Forums
- Learning
- GETS
- Tools
- New Postings
- Submit
- Index/Search

NRM Assessment Tool

Beginning in Fiscal Year 2018, the NRM community (Recreation and Environmental Stewardship Business Lines) will be utilizing the NRM-Assessment Tool (formerly the Rec-Assessment Tool) to collect annual data that will then be uploaded into OMBIL. Several notices, webinars and coordination have occurred through the OMBIL users group and District POC's.

OMBIL will remain the primary database of record for all O&M business line data and, as such, it is imperative that the data be kept current. OMBIL data is used for many different purposes, including decisions concerning facility development, budget development and defense, tracking performance measures, preparation of briefings and fact sheets, asset management, etc. It is used to populate information on the Gateway and numerous other internal and external web sites. OMBIL will continue to serve as source for many other systems including CWIFD, EDW and VERS. Inaccurate and/or incomplete data not only reflects poorly on the Corps and renders a disservice to the public, but could also jeopardize the viability of our O&M missions and budget defense.

This transition to a new platform is a gained efficiency for one-stop data entry rather than input into several systems as had been the standard in the past. The NRM-Assessment tool will serve as the data collection platform necessary to feed OMBIL the appropriate data. This process is more in line with other business lines that import data such as hydropower and navigation while allowing the NRM business line more flexibility and less OMBIL contractor work. Training through web meetings will be provided to the field on the data entry process as and will be announced through the OMBIL District POCs. The schedule for entering data by modules is as follows.

- o Recreation PSA Module - Includes: PSA Information and Facilities
PSA Module Opens 15 April and Close 15 May 2020
- o NRM Modules - Includes: Interpretive Contacts, Special Events, Law Enforcement Contracts, and Annual Project Data
Modules Open 15 September and Close 31 October 2020
- o Environmental Stewardship Modules - Includes: Shoreline Management, Boundaries/Encroachments, Soils/Vegetation/Wetlands Classification, Pollinators, Fire Management, Invasive Species, Fish/Land Mitigation, and Master Plans
Modules Open 15 September and Close 31 October 2020
- o Partnerships
Module Open 1 October and Close 15 November 2020

All links below are restricted to U.S. Army Corps of Engineers users.

- o [NRM Assessment Tool](#)
- o Webinars & Training materials are available for each of the modules once you log into the system.

NRM Assessment Tool

NRM Assessment Tool: Partnership Module

<https://gateway.erdc.dren.mil/nrm/rec-best/nrm.cfm>

NRM Assessment Tool

Welcome to the NRM Assessment Tool. There are multiple Modules within the NRM Assessment Tool to facilitate the annual OMBIL update along with the annual Rec-Assessment. All data within the OMBIL Update Modules will be uploaded into OMBIL, the database of record for our NRM project and PSA data.

OMBIL Update Modules 2020

- Recreation PSA Module - Opens 15 April and Close 15 May
- NRM Module (Annual Project, Interpretive Contacts, Special Events, & Law Enforcement Contracts) - Open 15 September and Close 31 October
- Environmental Stewardship Module (Shoreline & Boundary only) - Open 15 September and Close 31 October
- Partnerships Module - Open 1 October and Close 15 November

[NRM User's Group Members](#)

Log in

Select your project from drop down list and enter password

Select Project Password

Once logged in, select Partnerships Module

Create Password

Select your project from drop down list. If you don't see your project, an account may already be created.

Select Project

If your project has not logged into NRM Assessment before, you will need to select your project from this list and create a password.

FY20 Final Data

PSA Module

- [PSAs](#)

NRM Module

- [PSA Detail](#)
- [Volunteers](#)
- [Passes](#)
- [Project Roads](#)
- [Project Trails](#)
- [Title 18 Offenses](#)
- [Interpretive Contacts and Events](#)
- [Law Enforcement](#)
- [Special Events](#)

- [Partnership Module](#)

- [Previous FY Data](#)

ES Module

- [Shoreline Management](#)
- [Boundaries](#)
- [Encroachments and Trespasses](#)
- [Master Plans](#)
- [Fire Management](#)
- [Cultural Resources](#)
- [Pollinators](#)
- [Vegetation Classification](#)
- [Land Classification](#)
- [Invasive Species](#)
- [Federal Special Status Species](#)

If you'd like to review FY 20 data, click on this link to open a spreadsheet with your data.

NRM Assessment Tool

Assessment

- [Recreation PSA Module](#)
- [NRM Module](#)
- [Env Stewardship Module](#)
- Partnership Module

Partnership Module

Welcome to the Partnership Module of the NRM Assessment Tool. This module is replacing your annual OMBIL update.

[Webinar](#)

In Review

There are currently no Partnerships in the system. If you have a Partnership, you may [Start a New Entry](#)

If this is correct, please verify by signing below and provide a short explanation

Please enter your name to represent your signature

Approve & Submit

If you have entered No Partnerships in previous years, you will see this screen which asks you to enter new partnerships or verify that you still do not have any partnerships. An explanation and signature are mandatory. A member of the PAC team may follow up with your project.



US Army Corps
of Engineers®



NRM Assessment Tool

Assessment

- [Recreation PSA Module](#)
- [NRM Module](#)
- [Env Stewardship Module](#)
- Partnership Module

Partnership Module

Welcome to the Partnership Module of the NRM Assessment Tool. This module is replacing your annual OMBIL update.

[Webinar](#)

Click here for a refresher on how to enter your partnership data.

HQ USACE

In Review

- Step 1 - Review Partnerships
 - [See All of Your Partnerships](#)
 - [Contributions Program](#)
 - [Cooperative Agreement](#)
 - [Economy Act Partnership](#)
 - [Memorandum of Understanding/Memorandum of Agreement \(MOU/MOA\)](#)
- Step 2 - Annual Update
 - [See All of Your Partnerships](#)
 - [Contributions Program](#)
 - [Cooperative Agreement](#)
 - [Economy Act Partnership](#)
 - [Memorandum of Understanding/Memorandum of Agreement \(MOU/MOA\)](#)
- [Summary](#)

Click here to view all of your partnerships
(Check to see if they are all accounted for from FY19)

If you have entered partnerships in previous years, you will be taken to this screen to review past partnerships and enter FY20 data.



US Army Corps
of Engineers®



NRM Assessment Tool

Partnership Module - Step 1 - Review Partnerships

HQ USACE

Click "Organization Name" IF you need to edit the data NOT editable in table below (Type and Effective Date)

ADD New Partnership Agreement

Review the type, purpose, business line, and description for accuracy. If you need to edit the info, click on the partner name

Organization	Partner Organization Type	Purpose	BL	Co-Partners	Active This FY	Terminated	
Contributions Program							
Adventure Scientists	Nonprofit, Quasi Public, Or Community Organization	Environmental Stewardship	ES		No Activity	Terminate	-----
	Provided webinars						
Agents of Discovery <i>New Agreement</i>	Business (Concessionaire, Company, Sole Proprietorship)	Education	RC	US Forest Service	No Activity	Terminate	DELETE
	Webinars to showcase AOD app 201-2040 Springfield Rd Kelowna, BC, Canada V1Y9N7						
American Recreation Coalition	Nonprofit, Quasi Public, Or Community Organization	Recreation	RC		No Activity	Terminate	-----
	Recreation non-profit lobbying organization						
Clean Trails <i>New Agreement</i>	Nonprofit, Quasi Public, Or Community Organization	Environmental Stewardship	ES		No Activity	Terminate	DELETE
	Webinar on clean up days Unlisted Evergreen, CO 80439						
DC Park Rx	Nonprofit, Quasi Public, Or Community Organization	Health and Safety	RC		No Activity	Terminate	-----
	Park Rx webinar						
iNaturalist	Business (Concessionaire, Company, Sole Proprietorship)	Environmental Stewardship	ES		No Activity Activity	-----	-----
	Provided webinar						
National Wildlife Federation	Nonprofit, Quasi Public, Or Community Organization	Environmental Stewardship	ES		No Activity Activity	-----	-----
	Provided webinar on pollinators						

Assessment

Partnership Module

Module

Step 1 - Review

- See All
- Contributions Program
- Cooperative Agreement
- Economy Act Partnership
- Memorandum of Understanding/Memorandum of Agreement (MOU/MOA)

Step 2 - Annual Update

- See All
- Contributions Program
- Cooperative Agreement
- Economy Act Partnership
- Memorandum of Understanding/Memorandum of Agreement (MOU/MOA)

Summary

NRM Assessment Tool

Edit the partnership type, organization type, purpose, business line, description, number of co-partners and name of co-partners as needed, and click Update.

Partnership Module - Step 1 - Review Partnerships

HQ USACE

Partnership Type	Contributions Program
Organization	American Recreation Coalition
Partner Organization Type	Nonprofit, Quasi Public, Or Community Organization
Purpose	Recreation
Business Line	Recreation
Description	Recreation non-profit lobbying organization
Number of Co-Partners	0
Co-Partner	

Update

Assessment

▪ [Partnership Module](#)

Module

Step 1 - Review

- [See All](#)
- [Contributions Program](#)
- [Cooperative Agreement](#)
- [Memorandum of Understanding/Memorandum of Agreement \(MOU/MOA\)](#)

Step 2 - Annual Update

- [See All](#)
- [Contributions Program](#)
- [Cooperative Agreement](#)
- [Memorandum of Understanding/Memorandum of Agreement \(MOU/MOA\)](#)

Summary



US Army Corps
of Engineers®



U.S. ARMY

NRM Assessment Tool: Adding a Partner

NRM Assessment Tool

Partnership Module - Step 1 - Review Partnerships

Lake Sonoma / Warm Springs Dam (Dry Creek Lake and Channel)

Click "Organization Name" IF you need to edit the data NOT editable in table below (Type and Effective Date)

[ADD New Partnership Agreement](#)

Click here to add any new partnerships

Organization	Type	Purpose	BL	Co Partner	Active This FY	Terminated
Challenge Partnership						
SONOMA COUNTY	Local Governmental Agency	Education	ES		No Activity	Terminate
	Coho Salmon Interp film for the hatchery					
Contributions Program						
BACKCOUNTRY HORSEMAN	Nonprofit, Quasi Public, Or Community Organization	Recreation	RC		No Activity	Terminate
	The Backcountry Horseman of Sonoma County provides maintenance and enhancements on project lands.					
Bike Monkey	Nonprofit, Quasi Public, Or Community Organization	Recreation	RC		No Activity	Terminate
	Bike Monkey has provided services to maintain and enhance trail system at Lake Sonoma.					
California State Parks	State Agency(Other Than Military)	Recreation	RC		No Activity	Terminate
	Contributing 50+ life jackets for visitors to use when recreating in the lake.					
Sonoma County Bowmen	Nonprofit, Quasi Public, Or Community Organization	Recreation	RC		No Activity	Terminate
	Sonoma County Bowmen provide enhancements and maintenance of recreation facilities.					
Cooperating Association						
FRIENDS OF LAKE SONOMA	Other	Environmental Stewardship	RC		No Activity	Terminate
	LICENCE FOR USE OF THE VISITOR CENTER					
Memorandum of Understanding/Memorandum of Agreement (MOU/MOA)						
CALIFORNIA DEPARTMENT OF FISH & WILDLIFE	State Agency(Other Than Military)	Environmental Stewardship	ES		No Activity	Terminate
	MANAGEMENT OF THE FISH HATCHERY - AMENDMENT					
CALIFORNIA DEPARTMENT OF FISH & WILDLIFE	State Agency(Other Than Military)	Environmental Stewardship	ES		No Activity	Terminate
	MANAGEMENT OF THE FISH HATCHERY					
National Public Lands Day	Nonprofit, Quasi Public, Or Community Organization	Environmental Stewardship	ES		No Activity	Terminate
	NPLD					
U.S. Coast Guard Auxillary	Nonprofit, Quasi Public, Or Community Organization	Recreation	RC		No Activity	Terminate
	USCG Auxillary Sonoma Floatilla 55 provides inspections and education to boaters.					

Assessment

Partnership Module

Module

Step 1 - Review

See All

Challenge Partnership

Contributions Program

Cooperating Association

Memorandum of Understanding/Memorandum of Agreement (MOU/MOA)

Step 2 - Annual Update

See All

Challenge Partnership

Contributions Program

Cooperating Association

Memorandum of Understanding/Memorandum of Agreement (MOU/MOA)

Summary

NRM Assessment Tool

Select Partnership Type, and click Next

NOTE: Federal Grant (Specifically for Federal Highways grants and US Forest Service Pest Suppression grant tracking)

Partnership

HQ USACE

Agreement Type

Next ...

Select
Challenge Cost Sharing Cooperative Management Agreements
Challenge Partnership
Contributions Program
Cooperating Association
Cooperative Agreement
Economy Act Partnership
Federal Grant
Handshake Partnership
Memorandum of Understanding/Memorandum of Agreement (MOU/MOA)

- **Handshake Partnerships** - These agreements are a subset of challenge partnership agreements. They are partially funded through seed money provided by HQ. Projects must compete annually for these funds. HQ wishes to track these agreements separately to demonstrate the success of the program. Do not double count handshake agreements with any other challenge partnership agreements. If you have any questions whether your agreement is a handshake agreement, contact your District partnership program coordinator.
- **Challenge Partnerships** - The Corps can enter into agreements to accept funds, materials and services from non-federal public and private entities to provide for operation and/or management and development of recreation facilities and natural resources, where such facilities are being maintained at full federal expense. The partners contributed resources are combined with regular project resources to accomplish work within current authorities and contained in the annual or five-year work plan in the approved operational management plan. Work is generally accomplished during one fiscal year. (33 U.S.C. §2328; EP 1130-2-500, [Chapter 12](#); ER 1130-2-500, [Chapter 12](#)).
- **Challenge Cost Sharing Cooperative Management Agreements** - Corps facilities may be operated in collaboration with eligible non-Federal public entities through a Challenge Cost Sharing Cooperative Management (CCSCM) Agreement and Partner Operations Plan. Agreements may be entered into with non-Federal entities for the purposes of cooperatively managing public recreation areas, and fees may be collected and retained by the partner for reinvestment at the site at which the fees are collected.
- **Cooperating Associations** - A legal entity, organized under state law, with a non-profit and tax-exempt status under Internal Revenue Service codes and which operate under the terms of a Cooperating Association Agreement with the Corps of Engineers. They are free-standing corporate entities with boards of directors, purposes, and abilities consistent with their boards and objectives. Some associations work in single areas; others are involved in various areas achieving multiple tasks.
- **Cooperative Agreement** - A legal instrument reflecting a relationship between the Corps and a State, local government, or other recipient where a thing of value is transferred to carry out a public purpose AND substantial involvement occurs between all the entities or partners. A Cooperative Agreement provides a means to pay for assistance with a non-Federal partner. To implement this type of Cooperative Agreement, a specific statute or authority is necessary. These Cooperative Agreements follow the Department of Defense grant & Agreement Regulations (DoDGARS) (DOD 3210.6-R) and are generally administered through Contracting staff via a certified Grants Officer (Title 31, Subtitle V, Chapter 63, section 6305).
- **Contributions Program** - The Corps is authorized to accept contributions of cash, funds, materials, and services from groups and individuals for operation and management of recreation facilities and protection and restoration of natural resources at civil works water resource projects. Contributions must be within current authorities, consistent within the Corps' mission, and for work items contained in an approved OMP. A contribution plan serves as the agreement for this program.
- **Economy Act Partnerships** - Agreements for services and/or supplies with other federal agencies. Congress authorized government agencies to enter into agreements for goods and services when it is in the best interests of each agency and cost savings will result. This kind of agreement requires a determinations and findings approval form that documents verification and approval of legal authority for the agreement.

Assessment

Partnership Module

Module

Step 1 - Review

- [See All](#)
- [Contributions Program](#)
- [Cooperative Agreement](#)
- [Economy Act Partnership](#)
- [Federal Grant](#)
- [Memorandum of Understanding/Memorandum of Agreement \(MOU/MOA\)](#)

Step 2 - Annual Update

- [See All](#)
- [Contributions Program](#)
- [Cooperative Agreement](#)
- [Economy Act Partnership](#)
- [Federal Grant](#)
- [Memorandum of Understanding/Memorandum of Agreement \(MOU/MOA\)](#)

Summary

NRM Assessment Tool: Adding a Partner

NRM Assessment Tool

Partnership Module - Step 1 - Review Partnerships

New Hogan Lake

Agreement Type: Memorandum of Understanding/Memorandum of Agreement (MOU/MOA)

Select from the National List

Organization

IF you don't see the Organization in list above, S

Next ...

- Select
- Ace Hardware
 - American Canoe Association
 - American Chestnut Foundation
 - American Hiking Society
 - American Legion
 - American Recreation Coalition
 - American Red Cross
 - Americorps
 - Back Country Horsemen of America
 - BASS
 - Bass Pro Shops
 - BoatUS
 - Boy Scouts of America
 - Bureau of Land Management (BLM)
 - Bureau of Reclamation (BOR)
 - Burger King
 - Cabela's
 - CAST for Kids
 - Chik-Fil-A
 - Coca Cola
 - Corps Foundation
 - CVS
 - Dairy Queen
 - Domino's Pizza
 - Ducks Unlimited
 - Dunkin' Donuts
 - Eastern National
 - Environmental Protection Agency (EPA)
 - Federal Bureau of Prisons (FBOP)

Drop down list includes national organizations that USACE commonly partners with.

*Select from this list prior to creating a new partner.

Do not create a new partner if the parent organization is listed (i.e. Select Boy Scouts of America instead of creating Boy Scouts/Cub Scouts Troop 15)

To get a new national organization added, contact Heather Burke

Assessment

Partnership Module

Module

Step 1 - Review

See All

Contributions Program

Memorandum of Understanding/Memorandum of Agreement (MOU/MOA)

Step 2 - Annual Update

See All

Contributions Program

Memorandum of Understanding/Memorandum of Agreement (MOU/MOA)

Summary

Webdate: August 2018

[Technical Problems](#)

NRM Assessment Tool

Partnership Module - Step 1 - Review Partnerships

Lake Washington Ship Canal

Partnership Type	Contributions Program
Organization	Back Country Horsemen of America
Partner Organization Type	Nonprofit, Quasi Public, Or Community Organization
Effective Date	04/03/98 (mm/dd/yy)
Organization Address	Street 59 Rainbow Road City East Granby, State CT Zip 06029
Purpose	Recreation
Business Line	Recreation
Description	Equestrian trail maintenance
Number of Co-Partners	1
Co-Partner	American Hiking Society

Update

Fill in Partner Organization Type, Effective Date (date partnership started), Organization Address (if it does not auto-populate with the national address), Purpose, Business Line, Description, Number of co-partners (if applicable), and name of co-partners.

Assessment

Partnership Module

Module

Step 1 - Review

See All

Challenge Cost Sharing Cooperative Management Agreements

Contributions Program

Cooperating Association

Handshake Partnership

Memorandum of Understanding/Memorandum of Agreement (MOU/MOA)

Step 2 - Annual Update

See All

Challenge Cost Sharing Cooperative Management Agreements

Contributions Program

Cooperating Association

Handshake Partnership

Memorandum of Understanding/Memorandum of Agreement (MOU/MOA)

Summary



US Army Corps
of Engineers®



NRM Assessment Tool

Partnership Module - Step 1 - Review Partnerships

Lake Washington Ship Canal

Partnership Type	Select
Organization	Business (Concessionaire, Company, Sole Proprietorship)
Partner Organization Type	Educational Institutions (Schools, Universities)
Effective Date	Federal Agency (Other Than Corps and Military)
Organization Address	Local Governmental Agency
Purpose	Military Organization
Business Line	Nonprofit, Quasi Public, Or Community Organization
Description	State Agency(Other Than Military)
Number of Co-Partners	Other
Co-Partner	

Street
City , State Zip -

Select

Select

0

Update

Partner Organization Type drop down list:

- Business (concessionaire, company, sole proprietorship)
- Educational institute (schools, universities)
- Federal agency (other than Corps or Military)
- Local government agency
- Military organization
- Nonprofit, Quasi public, or community organization
- State agency (other than military)
- Other



US Army Corps
of Engineers®



NRM Assessment Tool

Partnership Module - Step 1 - Review Partnerships

Lake Washington Ship Canal

Partnership Type	Contributions Program
Organization	American Hiking Society
Partner Organization Type	Nonprofit, Quasi Public, Or Community Organization
Effective Date	<input type="text"/> (mm/dd/yy)
Organization Address	Street <input type="text"/> City <input type="text"/> , State <input type="text"/> Zip <input type="text"/>
Purpose	<div style="border: 1px solid black; padding: 2px;"><p>Select</p><ul style="list-style-type: none">EducationEnvironmental StewardshipHealth and SafetyMilitaryRecreation</div>
Business Line	
Description	<input type="text"/>
Number of Co-Partners	<input type="text" value="0"/>
Co-Partner	<input type="text"/>

Update

Purpose drop down list:

- Education
- Environmental Stewardship
- Health and Safety
- Military
- Recreation



US Army Corps
of Engineers®



NRM Assessment Tool

Partnership Module - Step 1 - Review Partnerships

Lake Washington Ship Canal

Partnership Type	Contributions Program
Organization	American Hiking Society
Partner Organization Type	Nonprofit, Quasi Public, Or Community Organization
Effective Date	<input type="text"/> (mm/dd/yy)
Organization Address	Street <input type="text"/> City <input type="text"/> , State <input type="text"/> Zip <input type="text"/> - <input type="text"/>
Purpose	Select
Business Line	Select
Description	Environmental Stewardship Recreation
Number of Co-Partners	0
Co-Partner	<input type="text"/>

Update

Business Line drop down list:

- Environmental Stewardship
- Recreation

Assessment

Partnership Module

Module

Step 1 - Review

See All

Contributions Program

Cooperating Association

Handshake Partnership

Memorandum of Understanding/Memorandum of Agreement (MOU/MOA)

Step 2 - Annual Update

See All

Contributions Program

Cooperating Association

Handshake Partnership

Memorandum of Understanding/Memorandum of Agreement (MOU/MOA)

Summary



US Army Corps
of Engineers®



NRM Assessment Tool

Partnership Module - Step 1 - Review Partnerships

Lake Washington Ship Canal

Click "Organization Name" IF you need to edit the data NOT editable in table below (Type and Effective Date)

[ADD New Partnership Agreement](#)

Your new partnership will show up as a 'New Agreement' If you entered a new partner in error, you can choose to delete.

Organization	Partner Organization Type	Purpose	BL	Co-Partners	Active This FY	Terminated
Back Country Horsemen of America <i>New Agreement</i>	Nonprofit, Quasi Public, Or Community Organization	Recreation	RC	1 American Hiking Society	No Activity	Terminate <input type="button" value="DELETE"/>
	Equestrian trail maintenance 59 Rainbow Road East Granby, CT 06029					
Bellevue Botanical Garden	Nonprofit, Quasi Public, Or Community Organization	Education	ES	0 Greater Seattle Fuchsia Society; Puget Sound Daylily Club; Discover Your Northwest; Cistus Nursery; University of Washington Botanical Gardens; Dunn Garden; Edmunds Community College Horticultural dept; Elizabeth C Miller Botanical Garden; Garden Conserva	No Activity	Terminate -----
	LWSC Centennial Community Gardening Event - 21 partners					
Discover Your Northwest	Nonprofit, Quasi Public, Or Community Organization	Recreation	RC	Boeing Employees Concert Band; Barneleikarringen; Tango at the Locks; Highline Community Symphonic Band; Cascadia Big Band; Sound and Fury Morris and Sword; Elliot Bay Pipe Band; East side Modern jazz; Kirkland City Orchestra; The Professor Gadget Sax qua	No Activity	Terminate -----
	Summer Concert Series at LWSC					
Discover Your Northwest	Nonprofit, Quasi Public, Or Community Organization	Recreation	RC	KNKX	No Activity	Terminate -----
	LWSC Special Event - Jazz Festival (2 Partners - DYNW KNKX)					
Discover Your Northwest	Nonprofit, Quasi Public, Or Community Organization	Environmental Stewardship	ES	Issaquah Fish Hatchery; WRIA 8 Bellevue Stream Team; Stewardship Partners; Washington Council of Trout Unlimited; National Wildlife Federation Pacific; National Oceanic and Atmospheric Administration (NOAA); Salish Seas Expedition Inc; American Fisheries	No Activity	Terminate -----
	Fisheries Day at Lake Washington Ship Canal					
Discover Your Northwest	Nonprofit, Quasi Public, Or Community Organization	Education	RC	History Link	No Activity	Terminate -----
	Centennial Documentary					
Friends of the Ballard Locks	Military Organization	Education	RC	0 Ranier Valley Historical Society; Seattle's totally relaxed ukelele musicians; History Link; Fremont Historical Society; East Side Heritage Society; Puget Sound Maritime Historical Society; The Center for Wooden Boats; American Society of Civil Engineers	No Activity	Terminate -----

Assessment

▪ [Partnership Module](#)

Module

Step 1 - Review

▪ [See All](#)

▪ [Contributions Program](#)

▪ [Cooperating Association](#)

▪ [Handshake Partnership](#)

▪ [Memorandum of Understanding/Memorandum of Agreement \(MOU/MOA\)](#)

Step 2 - Annual Update

▪ [See All](#)

▪ [Contributions Program](#)

▪ [Cooperating Association](#)

▪ [Handshake Partnership](#)

▪ [Memorandum of Understanding/Memorandum of Agreement \(MOU/MOA\)](#)

Summary

NRM Assessment Tool: Step 2 Annual Data Entry

NRM Assessment Tool

Same data fields as prior year. Fill in all boxes and click Update to save and complete calculations.

SMALL CHANGE: Enter Corps Labor Hours instead of Labor \$\$

NOTE: When filling in numbers, do not use commas between digits.

Partnership Module - Step 2 - Annual Update

J Percy Priest Dam and Reservoir

Please be sure to fill in ALL fields below. You may use TAB key to move between fields.

Note: Volunteer hourly rate for FY20 is \$27.20

Type	Organization	Number of Volunteers	Volunteer Hours	Value of Services	Partner Value				Total Partner Value	HQ Investment	Contract Cost	Materials & Equipment	Corps Labor Hours	Total Corps Cost	TOTAL	
					Value of Sales	Funds Invested	Professionl Services Provided	Material & Equipment Donated								
Contributions Program	Boys & Girls Club of America	<input type="text"/>	<input type="text"/>	\$ 0.00	---	<input type="text"/>	<input type="text"/>	<input type="text"/>	\$ 0.00	---	<input type="text"/>	<input type="text"/>	<input type="text"/>	\$ 0.00	\$ 0.00	Update
	Supplied participants in water safety program															
Contributions Program	City of Lavergne	<input type="text"/>	<input type="text"/>	\$ 0.00	---	<input type="text"/>	<input type="text"/>	<input type="text"/>	\$ 0.00	---	<input type="text"/>	<input type="text"/>	<input type="text"/>	\$ 0.00	\$ 0.00	Update
	Clean up of Hurricane Creek Boat Ramp															
Contributions Program	City of Mount Juliet	<input type="text"/>	<input type="text"/>	\$ 0.00	---	<input type="text"/>	<input type="text"/>	<input type="text"/>	\$ 0.00	---	<input type="text"/>	<input type="text"/>	<input type="text"/>	\$ 0.00	\$ 0.00	Update
	Library hosts water safety talk															
Contributions Program	City of Murfreesboro	<input type="text"/>	<input type="text"/>	\$ 0.00	---	<input type="text"/>	<input type="text"/>	<input type="text"/>	\$ 0.00	---	<input type="text"/>	<input type="text"/>	<input type="text"/>	\$ 0.00	\$ 0.00	Update
	Host of Murfreesboro Earth Day															
Contributions Program	Hickman Elementary School	<input type="text"/>	<input type="text"/>	\$ 0.00	---	<input type="text"/>	<input type="text"/>	<input type="text"/>	\$ 0.00	---	<input type="text"/>	<input type="text"/>	<input type="text"/>	\$ 0.00	\$ 0.00	Update
	Hosts Environmental Awareness Day															
Contributions Program	METROPOLITAN NASHVILLE-DAVIDSON COUNTY	<input type="text"/>	<input type="text"/>	\$ 0.00	---	<input type="text"/>	<input type="text"/>	<input type="text"/>	\$ 0.00	---	<input type="text"/>	<input type="text"/>	<input type="text"/>	\$ 0.00	\$ 0.00	Update
	Additional unpaid patrols of problem areas along the shoreline at J. Percy Priest Lake															
Contributions Program	Old Hickory Community Center	<input type="text"/>	<input type="text"/>	\$ 0.00	---	<input type="text"/>	<input type="text"/>	<input type="text"/>	\$ 0.00	---	<input type="text"/>	<input type="text"/>	<input type="text"/>	\$ 0.00	\$ 0.00	Update
	Host of water safety program															
Contributions Program	Rutherford County Stormwater Department	<input type="text"/>	<input type="text"/>	\$ 0.00	---	<input type="text"/>	<input type="text"/>	<input type="text"/>	\$ 0.00	---	<input type="text"/>	<input type="text"/>	<input type="text"/>	\$ 0.00	\$ 0.00	Update
	Hosts of Stones River Waterfest															
Contributions Program	TENNESSEE DEPARTMENT OF ENVIRONMENT AND CONSERVATION	<input type="text"/>	<input type="text"/>	\$ 0.00	---	<input type="text"/>	<input type="text"/>	<input type="text"/>	\$ 0.00	---	<input type="text"/>	<input type="text"/>	<input type="text"/>	\$ 0.00	\$ 0.00	Update
	Trail opening at Long Hunter State Park															
Contributions Program	TENNESSEE WILDLIFE RESOURCES AGENCY	<input type="text"/>	<input type="text"/>	\$ 0.00	---	<input type="text"/>	<input type="text"/>	<input type="text"/>	\$ 0.00	---	<input type="text"/>	<input type="text"/>	<input type="text"/>	\$ 0.00	\$ 0.00	Update
	Assisted with mechanical removal of encroaching vegetation at boat ramps															

Assessment

Partnership Module

Module

Step 1 - Review

See All

Contributions Program

Economy Act Partnership

Memorandum of Understanding/Memorandum of Agreement (MOU/MOA)

Step 2 - Annual Update

See All

Contributions Program

Memorandum of Understanding/Memorandum of Agreement (MOU/MOA)

Summary

NRM Assessment Tool: Summary

NRM Assessment Tool

Partnership Module - Summary

Lake Washington Ship Canal

									Partner Value					Corps Costs						
Organization	Partner Organization Type	Purpose	Business Line	Co-Partners	Number of Co-Partners	Number of Volunteers	Volunteer Hours	Value of Services	Value of Sales	Funds Invested	Professionl Services Provided	Material & Equipment Donated	Total Partner Value	HQ Investment	Contract Cost	Materials & Equipment	Corps Labor	Total Corps Cost	TOTAL	
Contributions Program																				
Back Country Horsemen of America <i>New Agreement</i>	Nonprofit, Quasi Public, Or Community Organization	Recreation	RC	American Hiking Society	1	109	6700	165423	---	500	0	1000	\$ 166,923.00	---	0	600	5000	\$ 5,600.00	\$ 172,523.00	
Equestrian trail maintenance 59 Rainbow Road East Granby, CT 06029																				
Bellevue Botanical Garden	Nonprofit, Quasi Public, Or Community Organization	Education	ES	Greater Seattle Fuchsia Society; Puget Sound Daylily Club; Discover Your Northwest; Cistus Nursery; University of Washington Botanical Gardens; Dunn Garden; Edmunds Community College Horticultural dept; Elizabeth C Miller Botanical Garden; Garden Conserva	0				---				\$ 0.00	---					\$ 0.00	\$ 0.00
LWSC Centennial Community Gardening Event - 21 partners																				
Discover Your Northwest	Nonprofit, Quasi Public, Or Community Organization	Recreation	RC	Boeing Employees Concert Band; Barneleikarringen; Tango at the Locks; Highline Community Symphonic Band; Cascadia Big Band; Sound and Fury Morris and Sword; Elliot Bay Pipe Band; East side Modern jazz; Kirkland City Orchestra; The Professor Gadget Sax qua					---				\$ 0.00	---					\$ 0.00	\$ 0.00
Summer Concert Series at LWSC																				
Discover Your Northwest	Nonprofit, Quasi Public, Or Community Organization	Recreation	RC	KNKX					---				\$ 0.00	---					\$ 0.00	\$ 0.00
LWSC Special Event - Jazz Festival (2 Partners - DYNW KNKX)																				
Discover Your Northwest	Nonprofit, Quasi Public, Or Community Organization	Environmental Stewardship	ES	Issaquah Fish Hatchery; WRIA 8 Bellevue Stream Team; Stewardship Partners; Washington Council of Trout Unlimited; National Wildlife Federation Pacific; National Oceanic and Atmospheric Administration (NOAA); Salish Seas Expedition Inc; American Fisheries					---				\$ 0.00	---					\$ 0.00	\$ 0.00

Do not forget to sign and click Approve & Submit to save your data. You can still make changes after selecting submit.

- Assessment
- Partnership Module
- Module
- Step 1 - Review
 - See All
 - Contributions Program
 - Cooperating Association
 - Handshake Partnership
 - Memorandum of Understanding/Memorandum of Agreement (MOU/MOA)
- Step 2 - Annual Update
 - See All
 - Contributions Program
 - Cooperating Association
 - Handshake Partnership
 - Memorandum of Understanding/Memorandum of Agreement (MOU/MOA)
- Summary

You must "Approve/Submit" this Project.

Please enter your name to represent your signature

NRM Assessment Tool

Assessment

▪ [Partnership Module](#)

Module

Step 1 - Review

- [See All](#)
- [Contributions Program](#)
- [Cooperating Association](#)
- [Handshake Partnership](#)
- [Memorandum of Understanding/Memorandum of Agreement \(MOU/MOA\)](#)

Step 2 - Annual Update

- [See All](#)
- [Contributions Program](#)
- [Cooperating Association](#)
- [Handshake Partnership](#)
- [Memorandum of Understanding/Memorandum of Agreement \(MOU/MOA\)](#)

[Summary](#)

Partnership Module -

Lake Washington Ship Canal

This Module has been completed



US Army Corps
of Engineers®



Partnerships in NRM – Common Errors

Special events

Many people forget that the contributions provided by partners is considered a partnership and has value.

Be sure to enter the partner info for Kids to Parks Day, National Public Lands Day, FLW fishing events, CAST fishing events, Get Outdoors Day, Bass Pro special events, etc.

The partner value should include the value of their time, and supplies they provide for the event (this can be booth space or marketing materials).



US Army Corps
of Engineers®



Entering National Public Lands Day (NPLD) Events

- 1) Enter volunteer data into the NRM Module of NRM Assessment Tool
- 2) Enter the event into the Partnerships module of NRM Assessment
 - a) If other partners are involved, list National Environmental Education Foundation (NEEF) as the primary partner and all others as co-partners
 - b) If no other partners are participating in the event, just list NEEF as the primary partner
 - c) Partner contribution should be the volunteer hours performed within the scope of the event.



US Army Corps
of Engineers®



Partnerships in NRM Assessment – Common Errors

National MOUs

If a partner is on the list of national MOUs and there is not some other agreement type involved in the project, make sure to select MOU. Many lakes also have local MOUs.



US Army Corps
of Engineers®



Partnerships in NRM Assessment – Common Errors

Cooperating Association

There is a pick-list for these associations. If you have an official association that is not on the list, let Heather Burke know and she will get it added.

Every one of these organizations should have some type of value associated with them for the year.



US Army Corps
of Engineers®



Partnerships in NRM Assessment – Common Errors

Contributions

Volunteer service value for individuals should not be included in the partnership section of NRM Assessment, unless they have also contributed funds, material/supplies.

Volunteers that work as part of an organization can be included here along with the value of funds, services, and materials contributed.

Volunteers that serve in an outgranted area (leased or licensed area) should not be counted in NRM Assessment unless they are working directly for USACE in that area and signed up on a OF301a form.



US Army Corps
of Engineers®



Entering Volunteer Hours Correctly

What NRM Assessment **DOESN'T** auto calculate:

- Total number of volunteer hours worked
 - Enter the TOTAL HOURS, not hours per volunteer
 - If you have 5 volunteers that worked 3 hours each, total volunteer hours should be 15 (not 3)

What NRM Assessment **DOES** auto calculate:

- Value of volunteer service
 - Automatically multiplies the total number of hours times the annual “value of volunteer service” set forth by the independent sector.



US Army Corps
of Engineers®



Where You Should Enter Volunteer Hours

Independent Volunteers

Volunteers Working as Part
of a Partnership Activity

Enter Hours into
NRM-Module: Volunteers
Section

Enter Hours into
Partnership Section in the
Details of the Specific
Partnership



US Army Corps
of Engineers®



Volunteer Data Decision Tree

Available on NRM Assessment/OMBIL Partnerships FAQ page and Volunteer Program FAQs page:

<http://corpslakes.usace.army.mil/employees/faqs.cfm?Id=partner-OMBIL&Nav=partner&View=Yes>

<https://corpslakes.erd.c.dren.mil/employees/faqs.cfm?Id=volunteer&View=Yes>

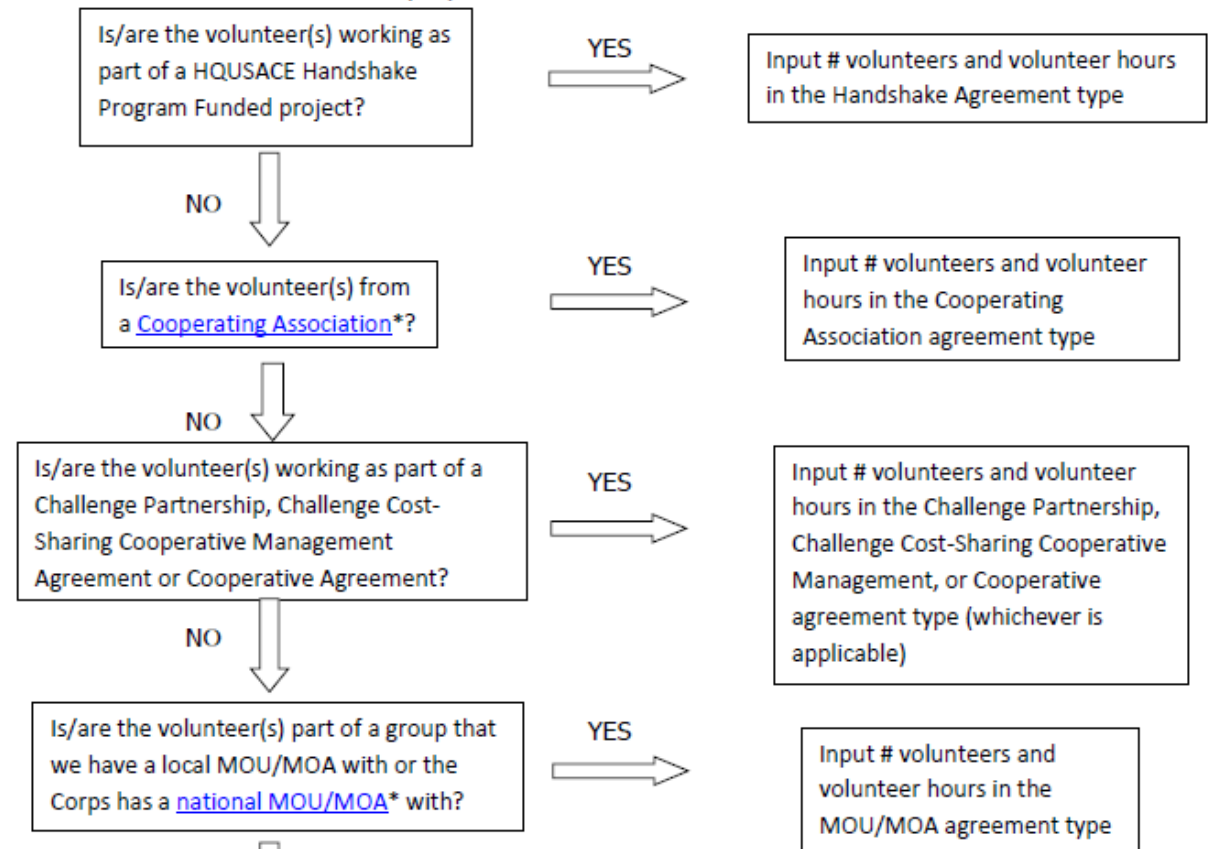
Step 1. NRM Assessment Tool NRM Module, Step 1- Volunteer Information

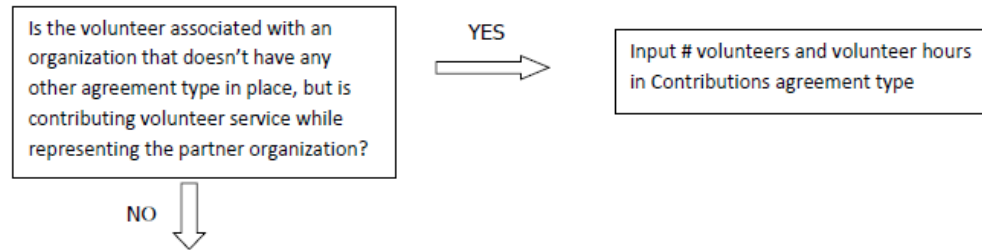
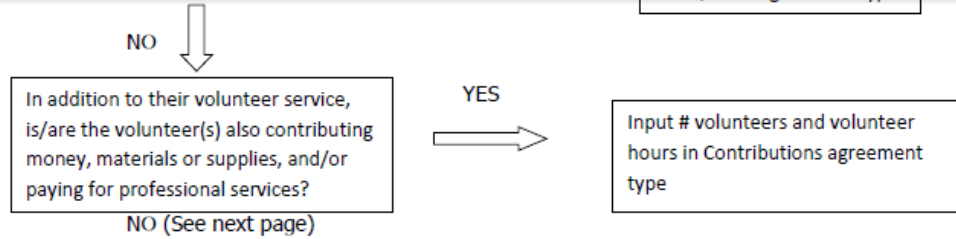
Enter ALL volunteer hours in this section of the NRM Assessment Tool. This is where you will capture the total number of volunteers, total hours of volunteer service (which will auto-calculate the total value of the service), and total incidental expenses reimbursed to all volunteers for the FY.

Step 2. NRM Assessment Tool Partnership Module

In addition to gathering information about the overall number of volunteers, hours, and value, we are also trying to capture more detailed data about volunteers that are part of a partnership. Some volunteers such as camp hosts, gate attendants, and other individuals who volunteer may only be counted in the NRM Module update. Other volunteers that are part of a partner organization should also have their hours counted in the Partnership Module update.

Please use the flow chart below to determine whether to count a particular individual volunteer's or group of volunteers' hours in the Partnership Update section of OMBIL.





If you answer No to all of the questions above, the data for these volunteers will ONLY be input in the NRM Module Update section of NRM Assessment, not under the Partnerships Module. If you answer Yes to any of the questions above, input the data into the first category with a Yes answer starting from the top down. Some volunteers may fit into multiple categories, but you should input the data in the first applicable category encountered in the flow chart.

Example 1: A volunteer group from IMBA (International Mountain Biking Association) may provide service to the Corps as part of a Challenge Partnerships Agreement, but they are also part of a national MOU. Because the Challenge Partnership agreement is an agreement for a limited, specific period of time and project, the volunteer hours for the particular project in the agreement should be input in the Challenge Partnership category instead of the MOU. If IMBA also volunteers hours not related to the Challenge Partnership Agreement, those additional hours would be input separately in the MOU category.

Example 2: Volunteers from a Cooperating Association, such as the Friends of Raystown Lake provide services for a project that is part of a Handshake Agreement. These hours should be input in the Handshake category instead of the Cooperating Association category, because the Handshake agreement is for a specific project. Additional hours volunteered by Association members such as working in a bookstore, creating interpretive materials, or managing a campground should be captured in the Cooperating Association category if they are not specifically associated with the Handshake project.

*See [NRM Gateway MOU/MOU page](#) for list of national organizations with MOU/MOA and [NRM Gateway Cooperating Association page](#) for list of associations in NRM Assessment/OMBIL. There is a pick-list of national organizations and cooperating associations already in the NRM Assessment Tool. If you have a new cooperating association that is not on the list, please contact Heather Burke to get it added to the system.



US Army Corps
of Engineers®



Tracking Materials Costs

Make sure that materials costs are included in your partnership data.

- If a Boy Scout Troop comes to work on your project and they bring their own gloves, include the cost of gloves in their contribution.
- If a project vehicle is used to move materials to volunteer sites around the project, include an estimate for vehicle cost to your materials provided to the partnership.



US Army Corps
of Engineers®



Partnerships in NRM Assessment Tool – Common Errors

Handshake (This is not the same thing as an informal partnership where you ‘shake hands’ with the partner.)

This partnership type should only be selected for those projects that have received handshake funds from HQUSACE in the past 3 fiscal years.

Once the handshake funded project is complete, if you still work with the partner in future years, you'll need to make that a new partnership type to reflect the work (i.e. contribution, MOU, challenge partnership as applicable)



US Army Corps
of Engineers®



Partnerships in NRM Assessment Tool – Common Errors

Economy Act

This partnership type should only be used when USACE is paying for another Federal agency's services or vice versa. This involves the combination of an FS 7600a (formerly MOA/Interagency Agreement) and FS7600b to transfer funds.

For data purposes, when USACE is purchasing services from the other agency:

- The amount we pay the other federal agency (to provide their service to us), input in the Partner Professional Services Provided column.
- If they have used their own materials/equipment, include that in the Partner Materials/Equipment column
- Cost to route the Economy Act Agreement through Contracting (Grants Officer), input in the Corps Contract Costs column.
- Cost of Corps field staff time to work with the other federal agency implementing the project, input in Corps Labor.
- Cost of materials and supplies (if any) from the Corps, input in Materials/Equipment



US Army Corps
of Engineers®



Partnerships in NRM Assessment Tool – Common Errors

Zero values

All of the prior year partners are automatically loaded into the system.

If a particular partner did not do anything with the project this year, it needs to be marked as No Activity.

Do not put zeros in every data field if the partner was not active.



US Army Corps
of Engineers®



Partnerships in NRM Assessment Tool – Common Errors

Corps Labor Hours

We need to continue focusing on getting the Corps costs entered in addition to the partner value.

There is always going to be an employee's time that should be captured in the Corps Labor Hours column.

We are also missing out on a lot of materials/ equipment value that we bring to these partnerships.

Enter CORPS HOURS instead of \$\$ of Corps Labor. The value will be auto calculated in the reports.



US Army Corps
of Engineers®



Data Field Definitions

- **Value of sales** (only for cooperating associations) - total value of gross sales returned to the project in accordance with the agreement.
- **Funds invested** - total dollar amount of cash funds invested by the partner (excluding bookstore sales funds reinvested in project)
- **Professional services provided** - total \$ value of professional services (i.e. engineer donating time to draft up plans and specifications or a grant writer donating professional time to research and write a grant proposal, etc.) provided by the partner. Calculate the value by multiplying the number of hours served times the prevailing hourly service charge.
- **Materials & equipment donated** - total \$ value of materials and equipment provided by the partner. Calculate the value of equipment using the local hourly/daily rental rate cost



US Army Corps
of Engineers®



U.S. ARMY

Data Field Definitions

- **HQ investment** (only for Handshake) - the total \$ value received from the Handshake Partnership money provided by HQUSACE
- **Contract Costs**- the total \$ value of services contracted by the Corps for use in conjunction with this agreement
- **Materials & Equipment provided** - the total \$ value of materials and equipment provided by the Corps
- **Corps Labor Hours** - the total number of hours of staff time provided by the Corps. This number will later be auto-multiplied by an average \$\$ of a park ranger hourly rate to get the dollar value.



US Army Corps
of Engineers®

